

Bricks

Designed for Living



Craftmanship and respect for nature

At Wienerberger, optimum use is made of carefully selected natural raw materials and where possible recycled materials, care is taken with energy consumption, emissions are reduced to a minimum and use is made of an internal water purification system. Our skilled and experienced people are the key to the high-tech production of TERCA facing bricks.

Handcrafted bricks

Handcrafted bricks used to be made by hand. The brick maker placed a lump of clay into a wooden mould, previously sprinkled with sand. He pressed the clay into the mould, removed any excess from the edges and turned the brick out of the mould. The result? Each brick was unique. Today all these processes are still the same, but they are carried out by ultra-modern machines and thanks to the mix of various types of clay, superb shades of colour can be achieved.





Wienerberger

Building Material Solutions

Quality

All facing bricks from Wienerberger have the internationally recognized CE label and are manufactured in accordance with BS EN 771-1. In addition, all factories operate in accordance with the quality management system ISO 9001 and ISO 14001.

Thanks to Wienerberger, you can build with confidence

When building, the choice of facing bricks is extremely important and often, they can determine the external look of your project. If you want your building to be aesthetically pleasing, it is preferable to choose facing bricks which suit the personality of the end user. You will undoubtedly find such bricks at Wienerberger, because with our TERCA brand we offer the widest range of clay bricks available in Europe. From the traditional to the avant-garde, in all imaginable colours and formats and with the highest quality, guaranteed. Wienerberger can satisfy all tastes.

Natural products for healthy modern living

It is the choice of materials that ultimately determines both the outer and inner character of a building and therefore its living and working climate. The unique qualities of clay make it the preferred building material for both traditional and modern construction methods. Clay products protect against every type of weather, from the harshest to the mildest, and meet the essential requirements for a healthy workplace and living environment. With their long life expectancy and natural properties, clay products are by definition environmentally-friendly. All of these qualities combine to make clay bricks and blocks the ideal building materials for your project.





Agora Wit Ivoor // **aHa Architecten - H. Verhelst (BE)**



Agora Wit Ivoor



Forum Branco



Oud Brugs



Marziale // **Henk de Haan, Atelier Rijksbouwmeester, Den Haag (NL)**



Marziale



Aurora



Orchidee Rose



Bronsgroen // **De Architectengroep, Amsterdam (NL)**
KraaijvangersUrbis, Rotterdam (NL)
Atelier Pro, Den Haag (NL)



Bronsgroen



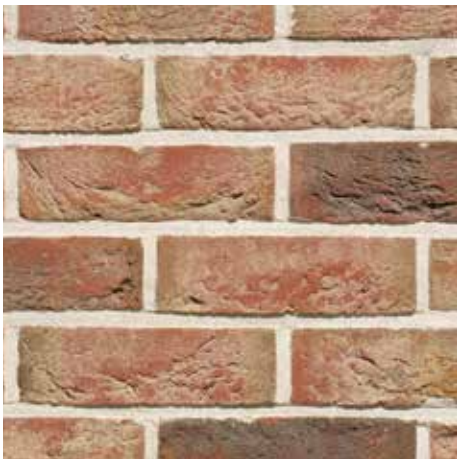
Oud Knokke



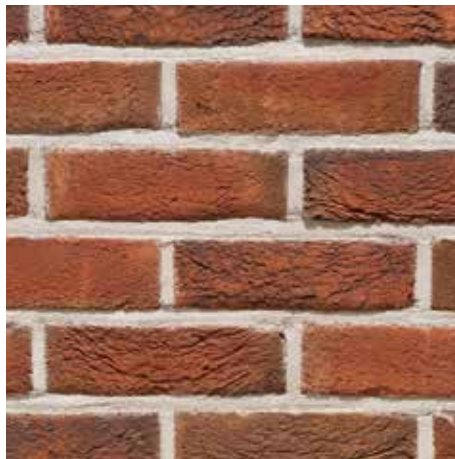
Kersenbloesem



Mix of Renaissance, Oud Knokke and Forum Cromo Genuanceerd // **3Architecten - Jan Tyvaert (BE)**



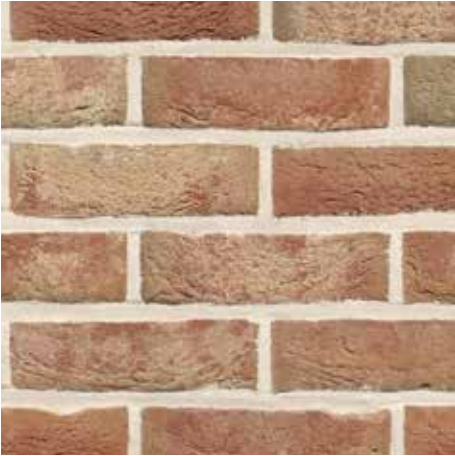
Renaissance



Bellbrook



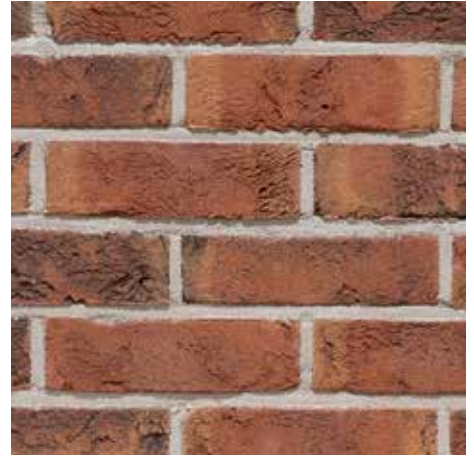
Bijou



Oud Rieme



Oude Veldsteen



Milano



Gravita //
**Mr. Zhuang Weimin,
Tsinghua Design &
Research Institute (CN)**



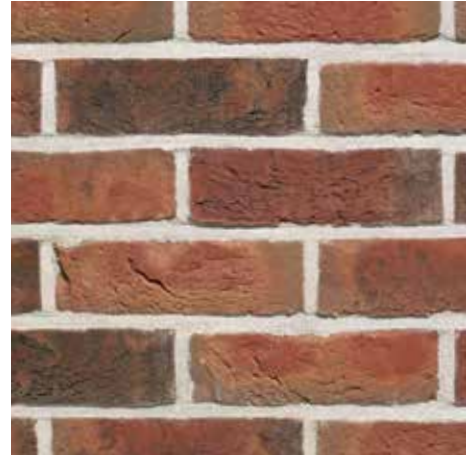
Gravita



Spaans Rood



Blauwrood Genuanceerd



Kastanjebruin

Blauwrood Genuanceerd // **BR2 (BE)**

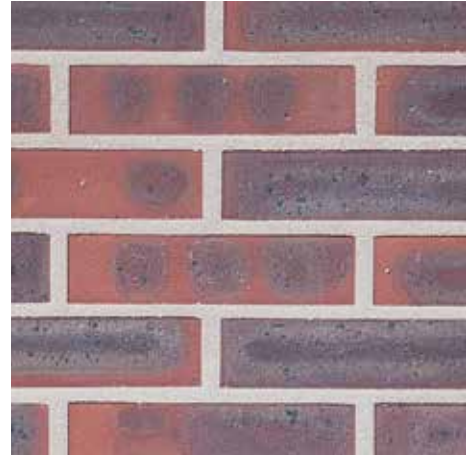




Hektiëk



Rosslau



Coq de Bruyère

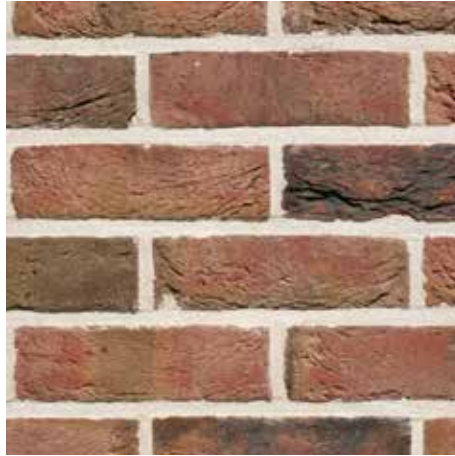
Hektiëk // **Patrick Lefebure (BE)**







Pastorale



Topaas



Welham Antique



Pastorale // **Unknown**

Pastorale // **J. De Graaf, Groningen (NL)**





Kogelbloem



Cassia Gesmoord



Iluzo Pagus Bruin-Zwart

Kogelbloem // **Architectenbureau Geukens bvba - Frans Geukens (BE)**

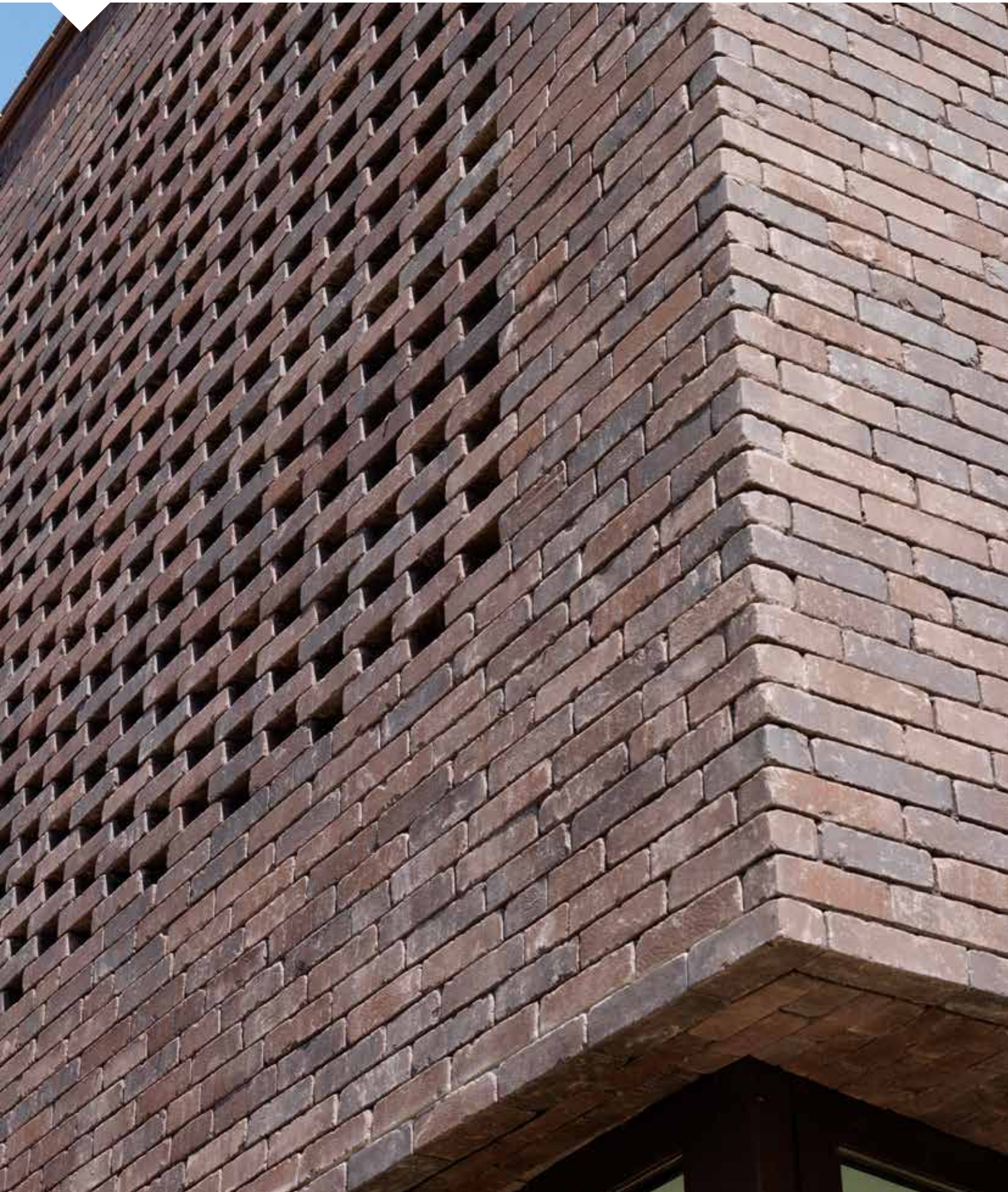


Linnaeus Salix // **Unknown**



Linnaeus Salix







ECO Agora Superwit



ECO Veldbloem



ECO Lichtbrons



ECO Forum Prata



ECO Agora Zilvergrijs



ECO Forum Branco
Genuanceerd Gesmoord



ECO Forum Prata Genuanceerd



ECO Forum Cromo



ECO Forum Cromo Genuanceerd



ECO Plaza



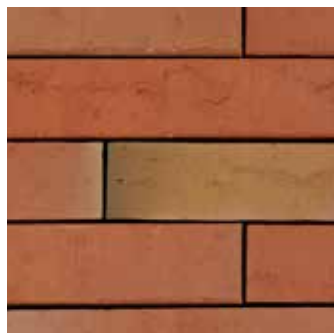
ECO Oud Romaans



ECO Barok "83



ECO Violente Speciaal



ECO Linnaeus Robinia



ECO Marono Rood Extra



ECO Wijnrood



ECO Paepsteen



ECO Rood



ECO Linnaeus Quercus



ECO Triton



ECO Dione



ECO Antraton



ECO Pampas



ECO Belcanto



ECO Marono Bruin Extra



ECO Ruston



ECO Reno



ECO Atlas



ECO Norton



ECO Forum Ombra



ECO Preston



ECO Marono Shadow Extra



ECO Linnaeus Gesmoord



ECO Marono Gesmoord Extra



ECO Agora Grafietzwart



ECO Nero Zwart Mangaan

Type	Plant	Weight/piece	Pieces/m ² (with joint of 12mm)	Average compressive strength	Water absorption	Initial water absorption	Available in brick slips
Agora Wit Ivoor	Beerse (BE)	± 2.52 kg	± 59	≥ 25 N/mm ²	≤ 8%	IW2	yes
Forum Branco	Beerse (BE)	± 2.54 kg	± 57	≥ 25 N/mm ²	≤ 10%	IW2	yes
Oud Brugs (M50)	Kortemark (BE)	± 1.28 kg	± 83	≥ 12 N/mm ²	≤ 19%	IW3	yes
Marziale	Thorn (NL)	± 2.70 kg	± 58	≥ 20 N/mm ²	≤ 12%	IW3	yes
Aurora	Beerse (BE)	± 2.39 kg	± 57	≥ 12 N/mm ²	≤ 17%	IW3	yes
Orchidee Rose	Beerse (BE)	± 2.39 kg	± 57	≥ 12 N/mm ²	≤ 17%	IW3	yes
Bronsgroen	Thorn (NL)	± 2.70 kg	± 58	≥ 25 N/mm ²	≤ 13%	IW3	yes
Oud Knokke	Kortemark (BE)	± 2.12 kg	± 57	≥ 12 N/mm ²	≤ 19%	IW3	yes
Kersenbloesem	Kortemark (BE)	± 2.12 kg	± 57	≥ 12 N/mm ²	≤ 19%	IW3	yes
Renaissance	Péruwelz (BE)	± 2.37 kg	± 57	≥ 12 N/mm ²	≤ 14%	IW3	yes
Bellbrook	Kortemark (BE)	± 2.12 kg	± 57	≥ 12 N/mm ²	≤ 19%	IW3	yes
Bijou	Kortemark (BE)	± 2.12 kg	± 57	≥ 12 N/mm ²	≤ 15%	IW4	yes
Oud Rieme	Kortemark (BE)	± 2.12 kg	± 57	≥ 12 N/mm ²	≤ 14%	IW4	yes
Oude Veldsteen	Péruwelz (BE)	± 2.25 kg	± 57	≥ 12 N/mm ²	≤ 16%	IW4	yes
Milano	Beerse (BE)	± 3.40 kg	± 48	≥ 12 N/mm ²	≤ 15%	IW3	yes
Gravita	Thorn (NL)	± 2.70 kg	± 58	≥ 20 N/mm ²	≤ 12%	IW3	yes
Spaans Rood	Beerse (BE)	± 2.39 kg	± 57	≥ 8 N/mm ²	≤ 13%	IW4	yes
Blauwrood Genuanceerd	Thorn (NL)	± 2.70 kg	± 58	≥ 20 N/mm ²	≤ 12%	IW3	yes
Kastanjebruin	Beerse (BE)	± 2.39 kg	± 57	≥ 12 N/mm ²	≤ 15%	IW3	yes
Hektiëk	Maaseik (BE)	± 2.40 kg	± 61	≥ 30 N/mm ²	≤ 15%	IW3	no
Rosslau (± 240 x 115 x 71)	Kirchkimmen (DE)	± 3.50 kg	± 48	≥ 35 N/mm ²	≤ 6%	IW2	yes
Coq de Bruyère (± 220 x 105 x 54)	Flines (FR)	± 1.50 kg (<i>perforated brick</i>) ± 2.46 kg (<i>full brick</i>)	± 65	≥ 40 N/mm ²	≤ 10%	IW3	yes
Pastorale	Beerse (BE)	± 2.39 kg	± 57	≥ 12 N/mm ²	≤ 15%	IW3	yes
Topaas	Péruwelz (BE)	± 2.37 kg	± 57	≥ 12 N/mm ²	≤ 14%	IW3	yes
Welham Antique	Veldwezelt (BE)	± 2.10 kg	± 57	≥ 25 N/mm ²	≤ 14%	IW4	yes
Kogelbloem	Haafden (NL)	± 2.80 kg	± 61	≥ 20 N/mm ²	≤ 12%	IW3	yes
Cassia Gesmoord (± 495 x 95 x 48)	Kortemark (BE)	± 4.40 kg	± 33	≥ 25 N/mm ²	≤ 8%	IW2	yes
Iluzo Pagus Bruin-Zwart (MOEF)	Kortemark (BE)	± 1.55 kg	± 80	≥ 12 N/mm ²	≤ 15%	IW4	yes
Linnaeus Salix (± 288 x 88 x 48)	Kortemark (BE)	± 2.00 kg	± 56	≥ 30 N/mm ²	≤ 8%	IW2	yes

All technical data are based on WDF format (±215x102x65mm)

Disclaimer The brick colours in this brochure show the natural tint of our bricks subject to the limitations of the printing process. The properties of bricks burnt of clay may vary, depending upon the works of origin and may slightly differ in colour from one production to another. Wienerberger reserves the right to alter the range and the technical data. Technical data are approximate. Customers are advised to obtain samples. The information in this brochure cannot be seen as binding and may be modified by Wienerberger at any time. 04/2015

Type	Plant	Weight/piece	Pieces/m ² (with joint of 12mm)	Average compressive strength	Water absorption	Initial water absorption	Dimensions (L x W x H) in mm
ECO Agora Superwit	Beerse (BE)	± 1.33 kg	± 73	≥ 25 N/mm ²	≤ 12%	IW2	210 x 65 x 50
ECO Veldbloem	Veldwezelt (BE)	± 1.25 kg ± 1.63 kg	± 73 ± 57	≥ 25 N/mm ²	≤ 17%	IW3	215 x 65 x 50 215 x 65 x 65
ECO Lichtbrons	Thorn (NL)	± 1.50 kg	± 67	≥ 20 N/mm ²	≤ 12%	IW3	230 x 70 x 50
ECO Forum Prata	Beerse (BE)	± 1.40 kg	± 71	≥ 25 N/mm ²	≤ 10%	IW2	215 x 65 x 50
ECO Agora Zilvergrijs	Veldwezelt (BE)	± 1.28 kg	± 73	≥ 20 N/mm ²	≤ 8%	IW2	210 x 65 x 50
ECO Forum Branco Genuanceerd Gesmoord	Beerse (BE)	± 1.40 kg	± 71	≥ 25 N/mm ²	≤ 10%	IW2	215 x 65 x 50
ECO Forum Prata Genuanceerd	Beerse (BE)	± 1.40 kg	± 71	≥ 25 N/mm ²	≤ 10%	IW2	215 x 65 x 50
ECO Forum Cromo	Beerse (BE)	± 1.40 kg	± 71	≥ 25 N/mm ²	≤ 10%	IW2	215 x 65 x 50
ECO Forum Cromo Genuanceerd	Beerse (BE)	± 1.40 kg	± 71	≥ 25 N/mm ²	≤ 10%	IW2	215 x 65 x 50
ECO Plaza	Veldwezelt (BE)	± 1.25 kg ± 1.63 kg	± 73 ± 57	≥ 25 N/mm ²	≤ 17%	IW3	215 x 65 x 50 215 x 65 x 65
ECO Oud Romaans	Veldwezelt (BE)	± 1.63 kg	± 57	≥ 25 N/mm ²	≤ 14%	IW4	215 x 65 x 65
ECO Barok "83	Veldwezelt (BE)	± 1.63 kg	± 57	≥ 25 N/mm ²	≤ 14%	IW4	215 x 65 x 65
ECO Violente Speciaal	Thorn (NL)	± 1.50 kg	± 67	≥ 20 N/mm ²	≤ 12%	IW3	230 x 70 x 50
ECO Linnaeus Robinia	Kortemark (BE)	± 1.53 kg	± 56	≥ 25 N/mm ²	≤ 11%	IW3	288 x 65 x 48
ECO Marono Rood Extra	Kortemark (BE)	± 1.53 kg	± 56	≥ 25 N/mm ²	≤ 11%	IW3	288 x 65 x 48
ECO Wijnrood	Thorn (NL)	± 1.50 kg	± 67	≥ 20 N/mm ²	≤ 12%	IW3	230 x 70 x 50
ECO Paepsteen	Veldwezelt (BE)	± 1.25 kg ± 1.63 kg	± 73 ± 57	≥ 25 N/mm ²	≤ 14%	IW4	215 x 65 x 50 215 x 65 x 65
ECO Rood	Zennewijnen (NL)	± 1.30 kg	± 79	≥ 45 N/mm ²	≤ 10%	IW2	200 x 65 x 50
ECO Linnaeus Quercus	Kortemark (BE)	± 1.53 kg	± 56	≥ 25 N/mm ²	≤ 11%	IW3	288 x 65 x 48
ECO Triton	Heteren (NL)	± 1,37 kg	± 76	≥ 45 N/mm ²	≤ 10%	IW1	200 x 65 x 50
ECO Dione	Heteren (NL)	± 1,37 kg	± 76	≥ 45 N/mm ²	≤ 10%	IW1	200 x 65 x 50
ECO Antraton	Zennewijnen (NL)	± 1,30 kg	± 76	≥ 45 N/mm ²	≤ 10%	IW1	200 x 65 x 50
ECO Pampas	Veldwezelt (BE)	± 1.63 kg	± 71 ± 57	≥ 25 N/mm ²	≤ 14%	IW4	215 x 65 x 50 215 x 65 x 65
ECO Belcanto	Thorn (NL)	± 1.50 kg	± 67	≥ 20 N/mm ²	≤ 12%	IW3	230 x 70 x 50
ECO Marono Bruin Extra	Kortemark (BE)	± 1.53 kg	± 56	≥ 25 N/mm ²	≤ 11%	IW3	288 x 65 x 48
ECO Ruston	Zennewijnen (NL)	± 1,30 kg	± 76	≥ 45 N/mm ²	≤ 10%	IW2	200 x 65 x 50
ECO Reno	Heteren (NL)	± 1,40 kg	± 76	≥ 45 N/mm ²	≤ 10%	IW1	200 x 65 x 50
ECO Atlas	Heteren (NL)	± 1,38 kg	± 76	≥ 45 N/mm ²	≤ 10%	IW1	200 x 65 x 50
ECO Norton	Zennewijnen (NL)	± 1,30 kg	± 76	≥ 45 N/mm ²	≤ 10%	IW2	200 x 65 x 50
ECO Forum Ombra	Beerse (BE)	± 1.40 kg	± 71	≥ 12 N/mm ²	≤ 15%	IW2	215 x 65 x 50
ECO Preston	Zennewijnen (NL)	± 1,30 kg	± 76	≥ 45 N/mm ²	≤ 10%	IW2	200 x 65 x 50
ECO Marono Shadow Extra	Kortemark (BE)	± 1.53 kg	± 56	≥ 25 N/mm ²	≤ 11%	IW3	288 x 65 x 48
ECO Linnaeus Gesmoord	Veldwezelt (BE)	± 1.48 kg	± 56	≥ 25 N/mm ²	≤ 11%	IW3	288 x 65 x 48
ECO Marono Gesmoord Extra	Veldwezelt (BE)	± 1.48 kg	± 56	≥ 25 N/mm ²	≤ 11%	IW3	288 x 65 x 48
ECO Agora Grafietzwart	Beerse (BE)	± 1.33 kg	± 73	≥ 7 N/mm ²	≤ 9%	IW3	210 x 65 x 50
ECO Nero Zwart Mangaan	Veldwezelt (BE)	± 1.25 kg ± 1.63 kg	± 73 ± 57	≥ 25 N/mm ²	≤ 14%	IW4	215 x 65 x 50 215 x 65 x 65

Service & Sustainability

A unique showroom concept

In our 2,000 sqm Wienerberger showroom, located only 15 km from Brussels airport, you can find the whole spectrum of Wienerberger products under a single roof: hollow blocks, facing bricks, clay roof tiles and clay pavers - in all sorts of shapes and sizes. You can look at and physically touch all the raw construction materials and immerse yourself in the richness of their colours and familiarize yourself with their natural textures.



An address that every construction professional and builder must know:

International Showroom Londerzeel:

Koning Leopoldlaan 1
B-2870 Breendonk
Belgium

T + 32 (0) 52 31 10 10
F + 32 (0) 52 31 10 20

Wienerberger International Export Division

Kapel ter Bede 121

B-8500 Kortrijk

T +32 56 24 95 83

F +32 56 26 43 32

Export.be@wienerberger.com

<http://export.wienerberger.com>

<http://export.wienerberger.com/ar>

<http://export.wienerberger.com/es>

<http://export.wienerberger.com/pt>

www.wienerberger.cn


Wienerberger
Building Material Solutions