

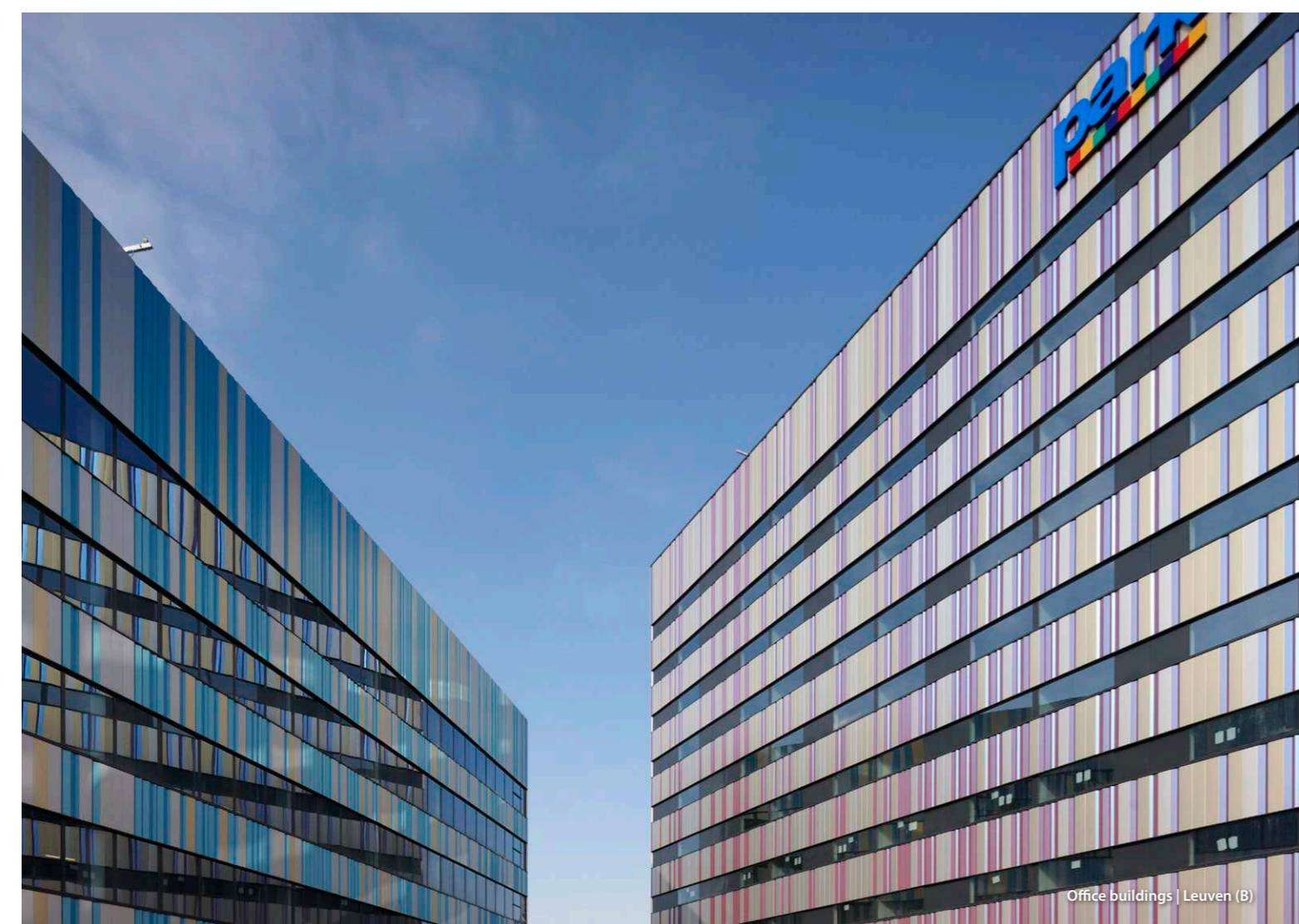
EuraMica

# Living color

Color your world



**EURAMAX**



Office buildings | Leuven (B)



Fish factory | Urk (NL)



Retailpark | Roermond (NL)



Sports Park Stozice | Ljubljana (SLO)

# Living color

**EuraMica** is a range of dual-tone colors based on mica flakes that reflect their own color and/or that of the base coat. This reflection and refraction causes a fascinating color variation that changes upon viewing angle and incidence of light.

## Gloss

Gloss levels have a major impact on the final color experience.

High gloss levels offer living colors, especially in dual-tone.

Low gloss surfaces offer more sophisticated aesthetics.

We can customize gloss levels (min. quantities apply).

## Guidelines

- Install EuraMica panels in the same direction to avoid reflection differences
- Order projects in one batch to avoid color differences
- Custom fliptone color development is possible
- Warranty indications are maximum warranty periods
- Many other colors available on [www.euramaxlab.com](http://www.euramaxlab.com)

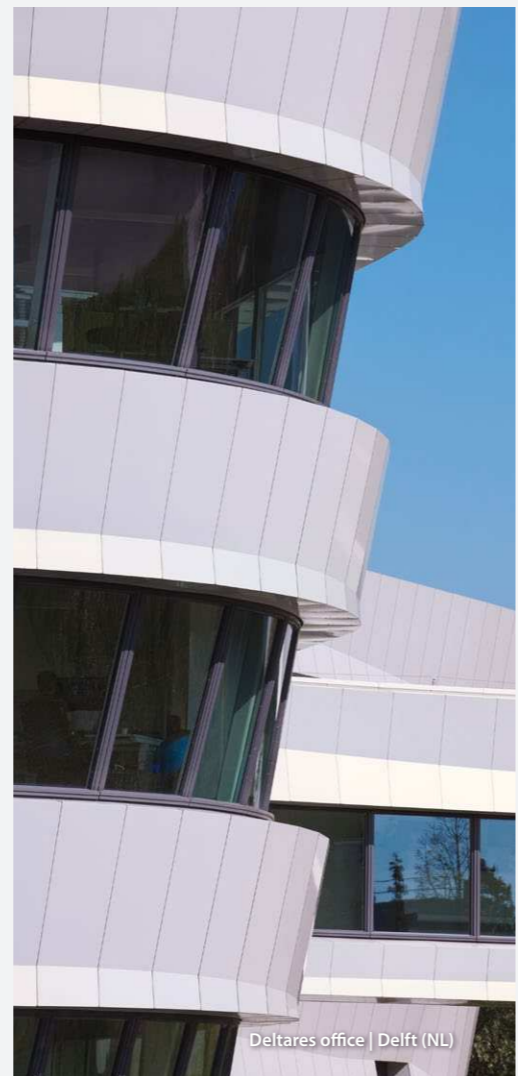
Contact our **Architectural Support** department for information or samples:

T +31 (0)475 370 341 | E [max@euramax.eu](mailto:max@euramax.eu)

We are happy to speak to you in



Mercedes-Benz Arena | Shanghai (CH)



Deltares office | Delft (NL)

**Aesthetic beauty in different characters.**

## Delicate grace

The pearlescent beauty of EuraMica is best shown in white. Evaluate the samples below in direct sunlight. You will be amazed by their vividness.

## Elegant sophistication

Rich color tones offering a touch of class.

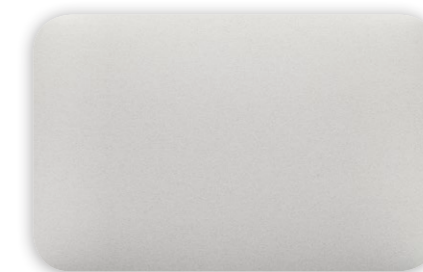
## Attract attention

Colorful dual-tone colors offer bright facades that turn heads.

## EuraMica - Delicate grace



**EuraMica PVDF 4L Lum**  
Onyx White\_Blue  
E-10-04-F-000443.90



**EuraMica PVDF 3L Lum**  
Onyx White\_Green  
E-10-03-F-002733.90



**EuraMica PVDF 3L Lum**  
Onyx White\_Gold  
E-10-03-F-000446.90



**EuraMica PVDF 3L**  
Pyrite Bronze\_Gold  
E-10-03-F-000331.90



**EuraMica PVDF 3L**  
Pyrite Gold\_Silver  
E-45-03-F-003703.30



**EuraMica PVDF 3L Lum**  
Anodized Gold\_Satine  
E-45-01-F-002303.30



EuraMica - Elegant sophistication



**EuraMica PVDF 3L Lum**  
Noir Claire Obscure  
E-10-03-F-003463.90



**EuraMica PVDF 3L Lum**  
L'eminence Grise  
E-10-03-F-001536.90



**EuraMica PVDF 3L Lum**  
Amethyst Beige\_Grey\_Purple  
E-10-03-F-000413.90



**EuraMica PVDF 3L Lum**  
Cabernet Sauvignon  
E-10-03-F-002425.90



**EuraMica PVDF 3L Lum**  
Amethyst Grey\_Green\_Purple  
E-10-03-F-002189.90



**EuraMica PVDF 3L Lum**  
Amethyst Sky Grey  
E-10-03-F-002079.90



Wehkamp Distribution Center | Zwolle (NL)

EuraMica - Attract attention



**EuraMica PVDF 3L Lum**  
Pyrite Grey\_Green\_Gold  
E-10-03-F-001355.90



**EuraMica PVDF 3L**  
Pyrite Gold\_Olive  
E-45-03-F-000362.30



**EuraMica PVDF 3L Lum**  
Moonstone Blue\_Gold  
E-10-03-F-000947.90



**EuraMica PVDF 3L**  
Amethyst Bordeaux\_Purple\_Green  
E-45-03-F-000355.30



**EuraMica PVDF 3L**  
Amethyst Purple\_Red  
E-45-03-F-000353.30



**EuraMica PVDF 3L**  
Moonstone Grey\_Green  
E-45-03-F-000372.30



**EuraMica PVDF 3L Lum**  
Pyrite Copper\_Orange\_Gold  
E-10-03-F-000359.90



**EuraMica PVDF 4L**  
Pyrite Orange\_Gold  
EE-45-04-F-000349.30



**EuraMica PVDF 3L Lum**  
Pyrite Red\_Green  
E-10-03-F-001516.30



La Cité du Vin | Bordeaux (F)

## Euramax Coated Products

Industrieweg 6 | 6045 JG | Roermond

PO Box 29 | 6040 AA | Roermond

The Netherlands

T +31 (0)475 370 303 | F +31 (0)475 323 923

[max@euramax.eu](mailto:max@euramax.eu)

[www.euramax.eu](http://www.euramax.eu)

### Disclaimer

The information contained herein (the "Information") – including pictures, colours, descriptions, statements with regard to size, quality, availability and the like – is provided by Euramax Coated Products BV ("Euramax") by way of non-binding information. Euramax makes no representations or warranties of any kind, express or implied, about the availability of products and/or the completeness, accuracy or reliability of the Information. Any reliance on the Information is at your own risk.

Colour samples are an indication of the (aesthetics of the) final product to be supplied. Due to the nature of the coating process measurable colour differences from the sample may occur. References to colour standards, such as RAL and Pantone, are an indication only and are solely used for ease of colour communication. No representations or warranties regarding the colour of the final products can be derived from a reference to a colour standard. The Information remains the property of Euramax.

All copyrights and/or other intellectual property rights in Information belong to Euramax. The contents of this Information are subject to amendment without notification.

This disclaimer is provided by Euramax Coated Products BV. We are registered in the Netherlands under company number 13013614. Please contact Euramax Coated Products BV for additional information or questions +31 475370303.



# EURAMAX